

Wide Area Networking at RAL

Robin Tasker

Network and Communications Group

Campus ICT, STFC



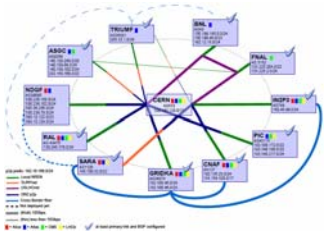
Contents



The UK Wide Area Network



The RAL site Core Network

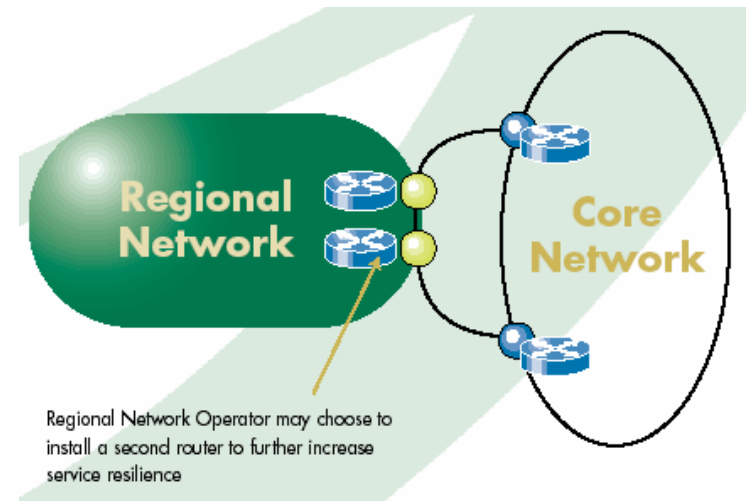
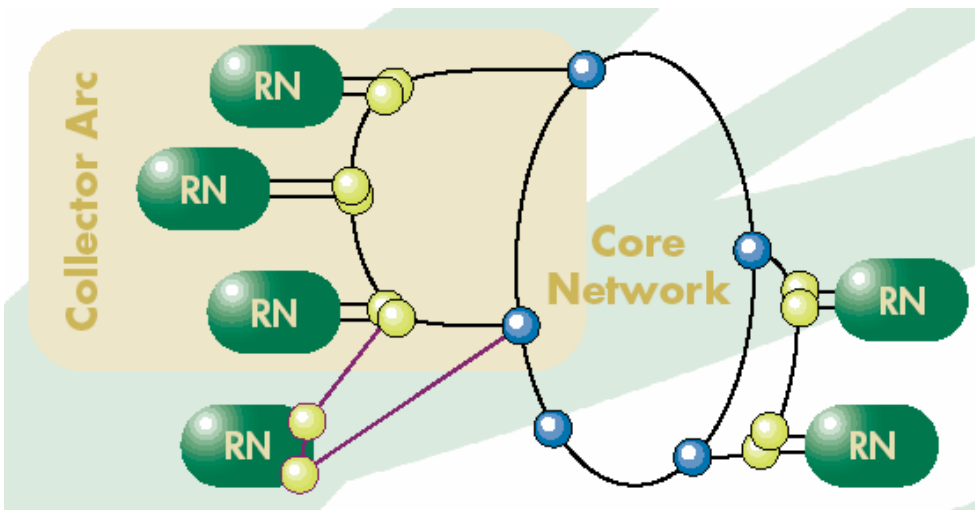
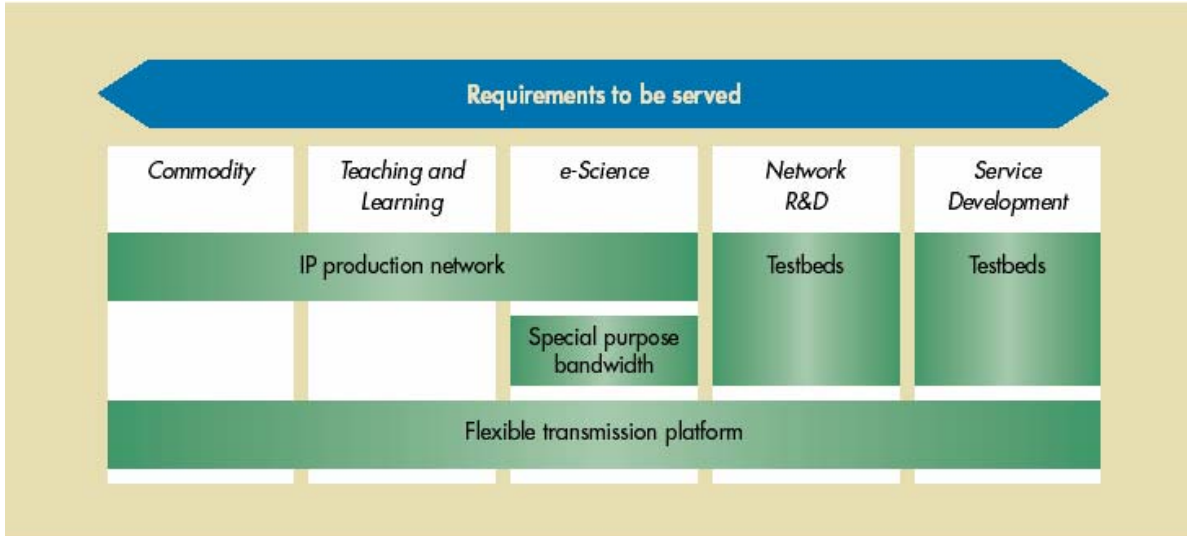


The LHCOPN

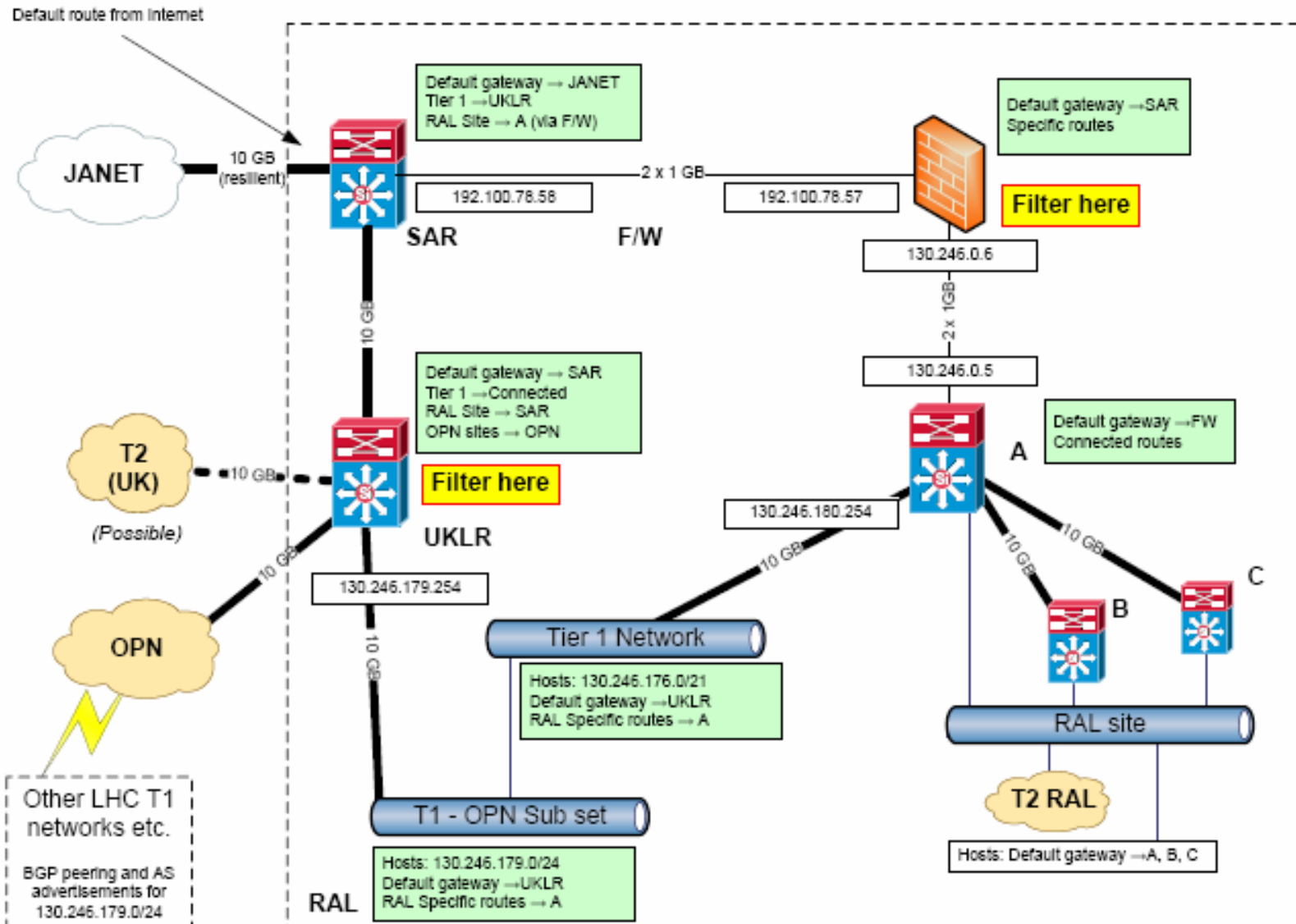
Building blocks for SJ5

Point-to-point bandwidth channels built on a flexible transmission platform provided as

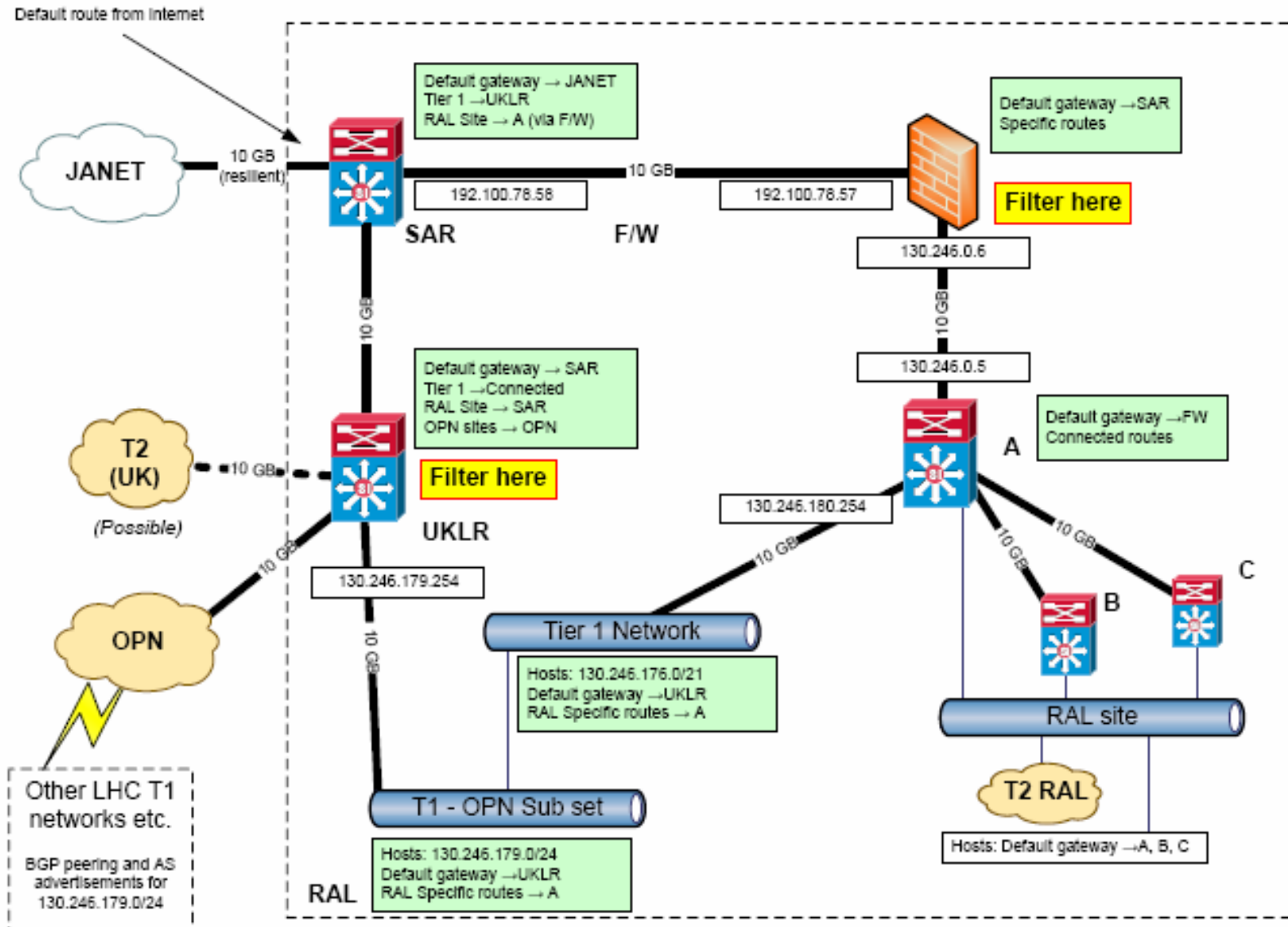
- dedicated wavelengths over a WDM (Wave Division Multiplexed) system or
- point-to-point SDH (Synchronous Digital Hierarchy) circuits.



RAL Core Network : November 2007



RAL Core Network : March 208 Plan





The Geant-2 Network

GEANT2
www.geant2.eu

GEANT2
Lighting the pathway for
European Research and Education

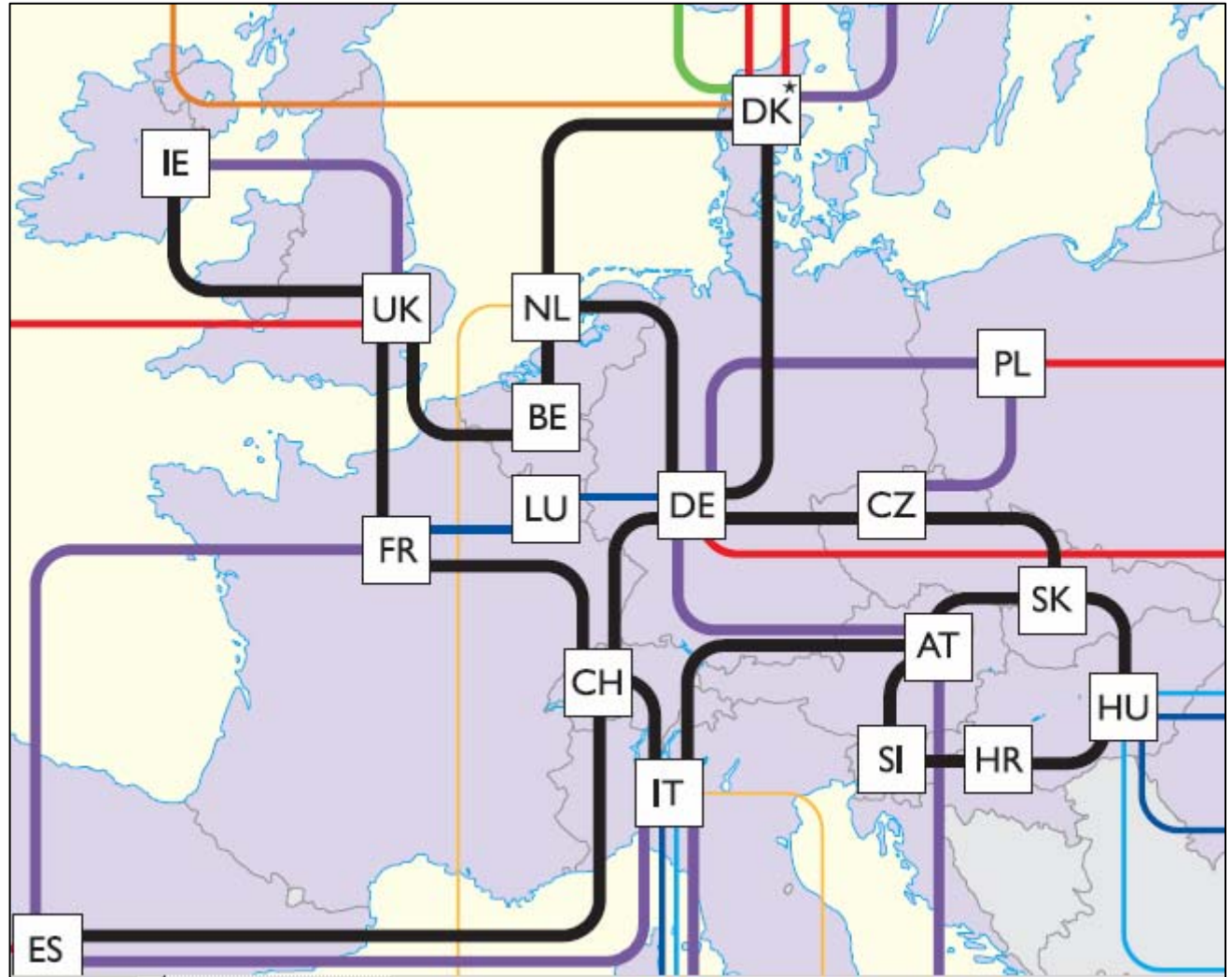
The first international hybrid research and education network.
Lighting dark fibre for greater network performance.

GEANT2 Decision Topology November 2004

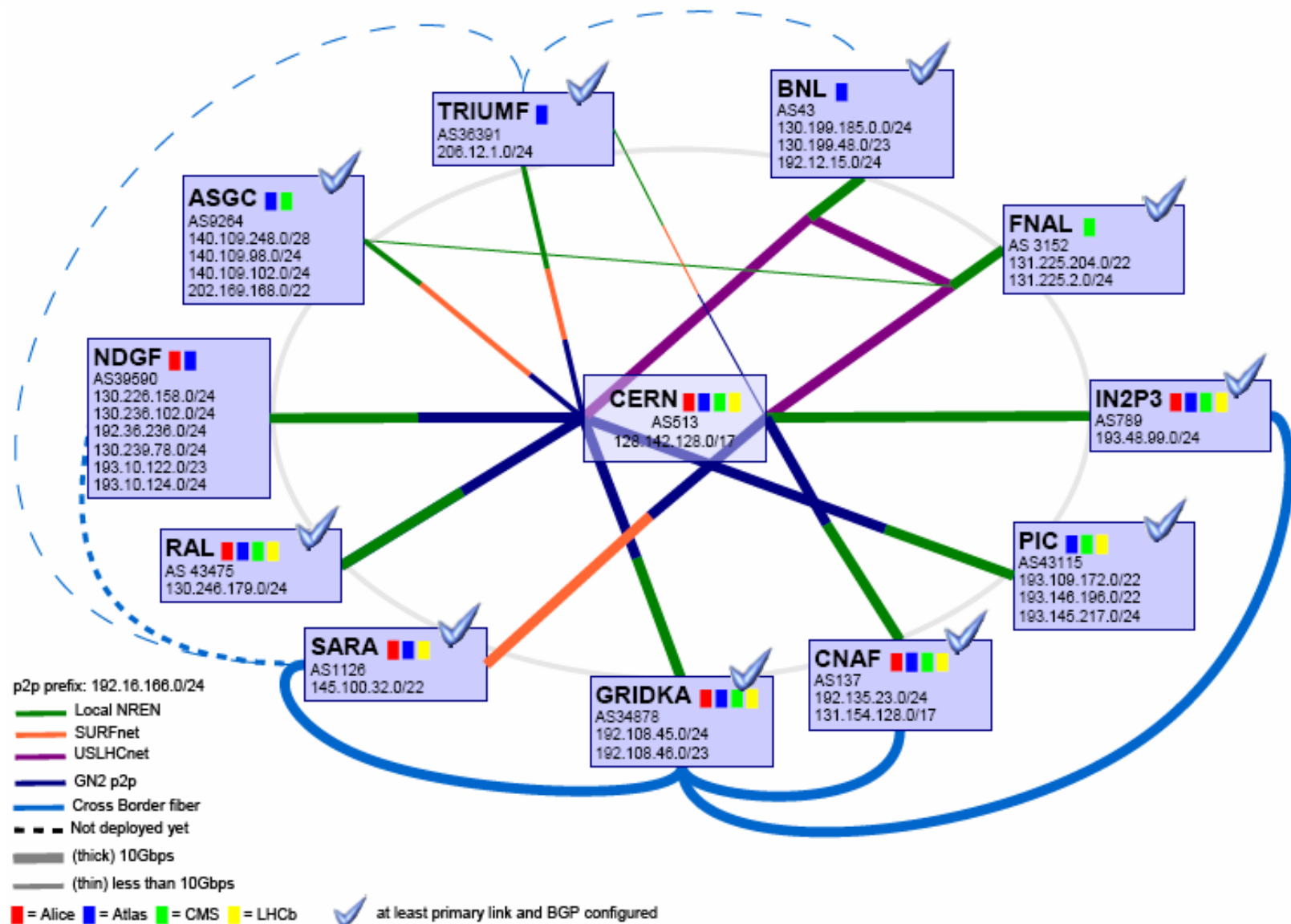
GEANT2 is operated by GÉANT2 on behalf of Europe's NRENs.

Belgium	Denmark	France	Germany	Greece	Ireland	Italy	Latvia	Lithuania	Poland	Portugal	Sweden	Switzerland	United Kingdom
Cyprus	Czechia	Finland	Spain	Slovakia	Slovenia	Spain	United Kingdom	United Kingdom	United Kingdom	United Kingdom	United Kingdom	United Kingdom	United Kingdom

GEANT2 is co-funded by the European Commission within the 6th Framework Programme.

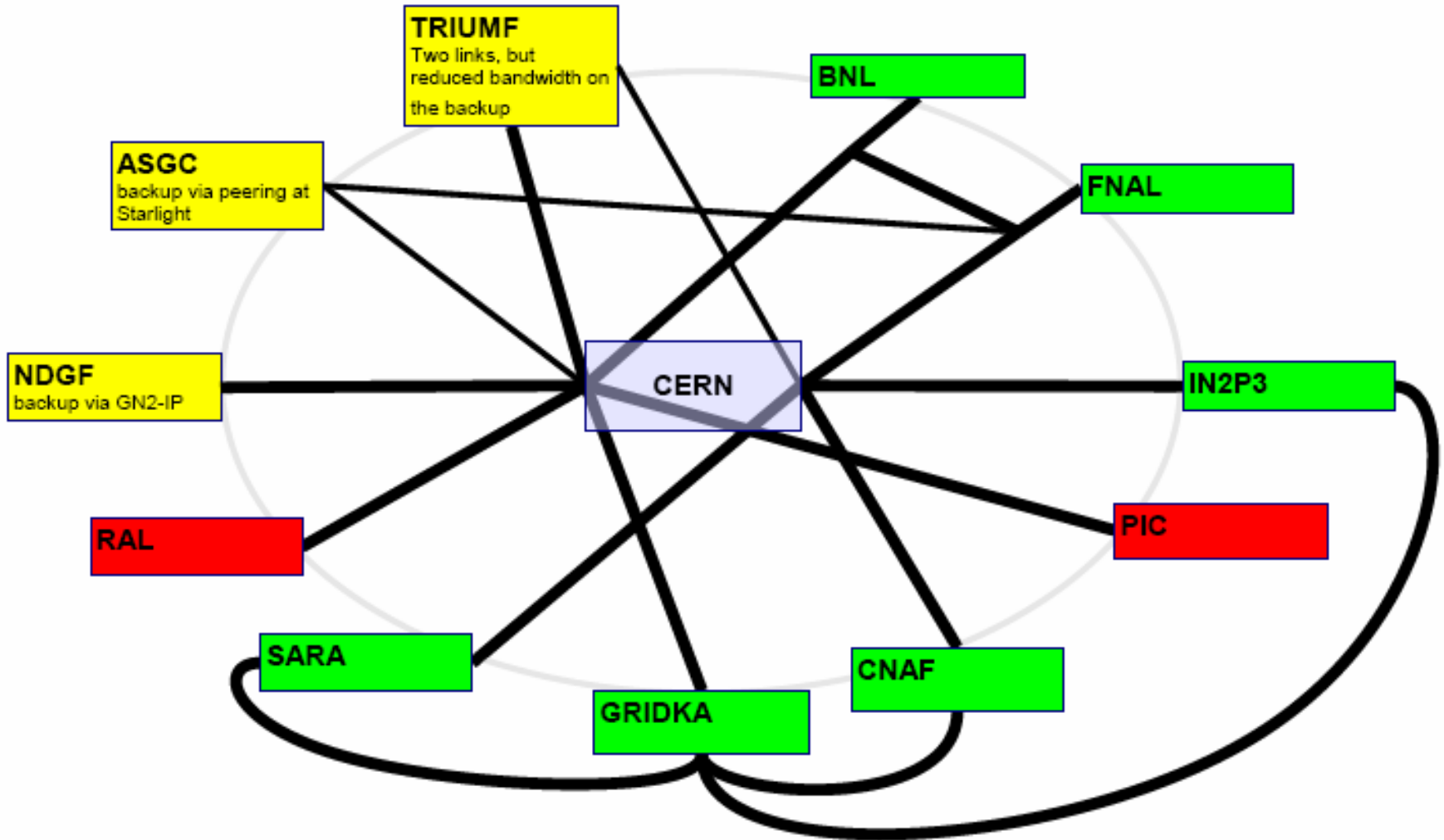


LHCOPN Status





LHCOPN Backup Status



LHCOPN Actions

RAL Resilience:

Options:

Diversely routed 10G lightpath

1 – 2 G diversely routed JANET Lightpath/Geant+

LHCOPN Monitoring:

perfSONAR at each LHCOPN site, end 2008Q1

LHCOPN Operations:

Agreed Operational Procedures, under development



Science & Technology Facilities Council

Campus ICT

Questions?